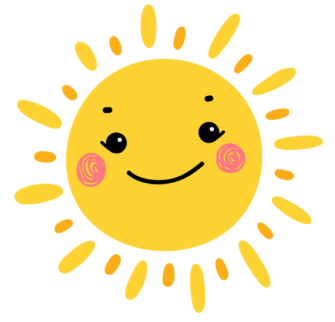


CHURCH LANGTON

YEAR 1

newsletter



AUTUMN 1

ENGLISH

GUIDED READING TEXT

Cave Baby and The Lighthouse
Keeper's Lunch

COMMON EXCEPTION WORDS:

is, we, he, me, be, she, the

PHONICS

/ae/, /ee/, <ea>, /oe/, /er/, /e/

GRAMMAR

Sentence Structure

Nouns

Bullet Points/Lists

Adjectives



WRITING

Lists, captions and sentences
Simple instructional Writing

RE / PSHE / PE / COMPUTING

RE: What does it mean to belong to a
faith community?

PSHE: Myself and My Relationships

PE: Multi-skills / Mighty Movers

Computing: Technology around us

MATHS

LESSON FOCUS:

Place Value within 10

VOCABULARY/FACTS:

More/greater than, less than,
equal to.

Addition and Subtraction

SCIENCE

Seasonal Changes

Introduce Plants, including
trees



HISTORY

Changes within living memory



REMINDERS

Enrichment - Music with Mr
Kirkland

Please send NUT FREE snacks in,
thank you!